

TOSTOCK CHRONICLE

February-March 2022

368

ON LINE:

www.tostock.pc.org.uk

The very well attended

Tostock Christmas fair

Held In the village hall.



A true sign that **spring** is on its way!

(photo by Emma Reader) who owns those dear lambs



Tostock's stunning

St Andrews Church at night



Inside: Things to come

Celebrations for our Queens Jubilee, project for Christmas, exciting village hall news, community involvement opportunities and much more !

Contacts in our Community

Tostock Parish Councillors

Harry Richardson harry.richardson@midsuffolk.gov.uk District councillor
Peter Boland peter.boland@gmail.com
Marie Johansson oldhallstables@btinternet.com
Olivia Boland olivia@tostockanimalparks.co.uk
Graham MacDowell crispincottage@hotmail.com
Andrew Mellen andrew.mellen@midsuffolk.gov.uk County councillor
Code of conduct: All Councillors should act solely in terms of the public interest

Footpath Officers VACANT

Tree Officer VACANT

Litter Picker

St Andrews Church

Rector: Katherine Valentine kavalentine677@gmail.com 01359 235095
Friends/Warden: Jeanne O'Reilly 01359 270337
Bell Ringers: Sue Marriott 01359 270143
Poor's Estate: Sharon Markell 01359 271190

Village Hall

Chair: Graham MacDowell crispincottage@hotmail.com
Hall Bookings: Doreen Buckle tostocktvh@hotmail.co.uk 01359 270605

Pub

The Gardners: Steve & Jill Gardner 01359 270460

Clubs

Past & Present: Sarah Scully 01359 270482
Tennis Club: Elizabeth Dunn ejd1@talktalk.net 01359 270270
Susie Walton susiewalton85@gmail.com 07793406076
Book Club: Julie Harrison 01359 270247
Carpet Bowls: Doreen Buckle 01359 270605

Media

Tostock Chronicle: Shirley Nice shirley.nice@btinternet.com 01359 271727
Sarah Reader : Advertising reader-family@tiscali.co.uk
Jim Langlois- Photography jimlanglois@btinternet.com 01359 270456

Website:

Diane Mathews www.tostockpc.org

*Anyone wishing to add their email, please get in touch.

More details and the latest up to date information, is available on our village website.

www.tostockpc.org.uk

Services

Emergency Police/Fire/Ambulance 999

Energy power failures & Emergencies

08007 838866

Anglian water 08457 145145

Health

Woolpit Health Centre 01359 240298
Out of Hours 111
West Suffolk Hospital 01284 713000
BMI Hospital 01284 701371
St Nicholas Hospice 01284 766133

Advice

Relate 01284 767305
Samaritans 01284 750000
Drugs Hotline 0800 253 253
Citizens Advice Bureau 01284 753675

Police

Non-emergency 101
Crime Stoppers 555

Councils

Suffolk County Council 03456 066067
Mid Suffolk District Council 0300 1234000

Education

Thurston Community College 01359 230885
Norton Pre-school 01359 232736
Norton Primary School 01359 230520

Leisure

Cineworld 0330 333 4444
Theatre Royal 01284 769505
Apex 01284 758000
Picture House 01284 754477

Travel

*NEW BUS TIMETABLE

Bus: www.suffolkonboard.com

Rail: 0845 7484950

Dial a Ride 01440 712048

NEXT EDITION: Is for

April/May 2022

Please may I have your contributions on or

BEFORE 19th MARCH

preferably in word or publisher format, much appreciated.

shirley.nice@btinternet.com

01359 271727

Celebrations !!



Party !!

The Queen's Platinum Jubilee

Tostock have always been pretty good at celebrating royal events; we like a party. The Village Hall Committee would like to invite anyone in the village who is interested and has some good ideas, to a meeting at Woodend Green Cottage on

Thursday 10th February 7:30pm,
to discuss a way to celebrate this event.

If you can't make it, but have some ideas, please contact:

Vanessa Malcolm email: vimalcom@aol.com

Or

Rosemary Lister. 270179. email: rosemary.lister13@gmail.com



Village Project 2022

Inspired by our village 'mystery crocheter', a big thank you goes to you for creating such wonderful post box toppers, I would like to propose making a christmas tree for The Green this year, produced from crocheted and knitted squares.



If you would like to participate in this village project (I already have on board the 'mystery crocheter' and Vanessa Malcolm) please contact me for more details.

If you would like to contribute in another way, donations of wool would be much appreciated, the more squares made the bigger the tree, Let's get crafty and bring this idea to life!

Sarah Reader

The Leap, Leys Road

Whatsapp/text: 07443958387

Landline: 01359 408932

Email: reader2014@talktalk.net



Tostock Village Hall News January 2022

Firstly, best wishes to all for the year ahead.

We hope that 2022 will be an easier year for everyone.

Our last committee meeting took place on 11th January 2022 via Zoom. As outlined below, the AGM, followed by a committee meeting will take place on Monday, 28th March 2022.



If you have any general questions regarding using hall, please email: tostockvillagehall@outlook.com
For booking enquiries, please email tostockvh@hotmail.co.uk

TOSTOCK
VILLAGE HALL
COMMITTEE



The Tostock Village Hall Committee meets four times a year to discuss the best way to manage the running and the future improvement of our Village Hall & Playing Fields. Meetings are kept informal, yet focused, and often discuss future fundraising, and many other sociable aspects of village life.

**Our Annual General Meeting (AGM) will be held on
Monday, 28th March 22 at 7pm.**

**All are welcome to come along to the AGM.
Your ideas and suggestions are always welcomed.**

SATURDAY, 30th April 2022, 10am – 2pm

IMPROVING OUR HALL
Initial Design & Concept Ideas

Open Session at the Hall to view outline proposals & have
your say



The Village Hall Improvement Project team would like to share with you some of the draft design concepts and proposals that have been put together by the architects who have been working with us.

The open session will run from 10am-2pm on Saturday, 30th April at Tostock Village Hall.

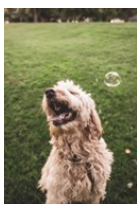
Please come along so that you can share your voice, and help shape the future of the hall. We are planning to provide an on-line version for anyone who is not able to make this session. Details about this will be advertised on our Facebook page or alternatively contact us via tostockvillagehall@outlook.com for more information.



Tostock celebrates the Queen's Platinum Jubilee

Please see separate Notice to be involved in the planning for our village celebrations in June 2022.

Page 2



Thank you to all for keeping dogs on leads and keeping the playing fields clean.

The playing fields and paths through the wildflower meadow are there to be enjoyed by our four-legged friends whilst being kept on leads. Many thanks to all dog owners for respecting this, also for conscientiously cleaning up after their pets and helping to maintain a space which can be enjoyed by all.



Bring & Share Bookcase

Please feel free to enjoy a book from the Bring & Share Bookcase when you are at the hall; bookcase just inside the entrance door to the hall.



Tostock Past & Present Society



Speakers for Tostock Past & Present Society 2022

(All our meetings are in Tostock Village Hall at 7.30pm)

February 1st -AGM + Derek Wilding **SARS: Suffolk Accident Rescue**

March 1st- Roy Tricker **100 plus-and Not Out!**

How Suffolk obtained its own Cathedral. Bishop & Diocese

April 5th - Bryan Thurlow **The Burston School Strike**

May 3rd - Wendy Smith **A day in the life of a Wimbledon line judge**

June 7th - John Field **Carl Giles & his adopted town - Ipswich**

Sept 6th - Mike Wabe **That Rings a Bell: The history of the Town Crier**

October 4th- Dave Steward **The History of the North Norfolk Railway (The Poppy Line)**

November 1st- Rory O'Brien **The History of the Theatre Royal in Bury St Edmunds**

Tuesday December 6th – Pip Fletcher **The Real Sound of Music**

Please contact me if you need any further information. Email a.r.scully@btinternet.com

Anthony Scully. Chairman

TOSTOCK CARPET BOWLS CLUB

We resumed again after the Christmas break. Nearly all of our members have returned again with the required safety precautions. A few friendly fixtures have been arranged for the next few months.

FEBRUARY

Monday 7 – away to Gt Whelnetham 7.30pm

Friday 18 – away to Stanton 7.30pm

MARCH

Thursday 10 – home to Stanton 7pm

Tuesday 15 – away to Woolpit 7.30pm

Thursday 24 – home to Gt Whelnetham 7pm

APRIL

Thursday 7 – home to Woolpit 7pm



We decided due to the circumstances to cancel our annual combined New Year lunch with Woolpit Carpet Bowls Club, which normally takes place in January - we hope to re-arrange this later in the season.

Doreen Buckle

Up until 7 years ago, a very good friend of mine “Greg” used to come up and occasionally visit us, all the way across from Wales and visa/versa and we’d go there. Whenever he came up to us we would always do our best to show him the main attractions around Suffolk and East Anglia, also go birding and show him our wildlife. The very first thing he used to remark about was the large number of common Pheasants and Partridges that we have around our fields and countryside. As they seem to be quite rare and less frequent in Wales, so I suppose we take them for granted. The Pheasant was one of Greg’s favorite birds. Sadly Greg passed away February 2015 with terminal cancer, just 7 months after his last visit to us. He went away captivated and enthralled. So this edition is in his honour and memory. The reason why Pheasants are so popular over here in the East is that we have the ideal habitat for them – farmland, woods, plantations, parks and our many estates around here. I openly have to admit from a wildlife enthusiast come photographers point of view, my admiration for the Pheasant which is undoubtedly one of Britain's most colourful birds so let's take a look



Left and Right male, centre female Taken behind Wood Close towards the Horse paddocks and Rectory Farm

Pheasant (*Phasianus Colchicus*) originally introduced into Britain from Asia in the 11th century, is now a very common site throughout this Country. The birds natural instinct is to run rather than fly, so during a shoot gangs of beaters encourage the birds to leave the ground. The Pheasants nest in a hollow in the ground lined with grass and concealed by vegetation. A clutch of 7 to 15 pale buff eggs, mottled with brown, are laid in April or May, the male has more than 1 partner and females will all lay in the same nest. Size - male 75-90 cms, females 50-65 cms Description - male has red face, a glossy green head and neck, flecked ruffled plumage and a long tail. Female is a mottled buff colour with a shorter tail. Habitats - farmland, plantations, and woods. Voice - male makes a chattering cork, cork, cork sound. Flight - explosive take off, then bursts of flapping followed by long glides. By the end of the 19th century Pheasants had been introduced to most parts of the British Isles to provide for the increasingly popular sport of shooting. Pheasants were carefully preserved for sport on most of the major estates. Gamekeepers were employed to reduce the vermin that might threaten the Pheasant stocks and to prevent poaching by the likes of us. Special areas of deciduous woodland usually arranged in long, narrow, and sometimes L shape strips, were planted as special Pheasant coverts. Often an understorey of Rhododendrons was also planted. Each day the Gamekeeper would scatter grain in the coverts. Thus, these coverts provided the Pheasants with shelter and kept them concentrated in one place, so that shooting days the bag would be as big as possible. Eventually, it was realised that allowing the pheasants to breed naturally was not the ideal way to produce good shooting. It therefore became policy to trap the birds remaining at the end of the shooting season so that the eggs were laid in captivity. These eggs were then incubated under broody hens or incubators and the young hand reared. This is still the usual pattern today. Thus most of the Pheasants shot in the British Isles are not really wild, that is one of the reasons why I am not opposed against shooting Pheasants and I am sure that some of the old wise Pheasants are clever and crafty enough to escape the guns, and therefore there is a large number of ferals which are capable of breeding in the wild still. I strongly oppose anybody shooting Golden Eagles, Hen Harriers, Woodcocks etc. Also I like all forms of sport including Shooting, which get my full support. In fact I am rather partial to a brace of game birds myself, should anyone out there put them on a plate in front of me (just joking) but you never know your luck. The end of Winter is signalled by the Pheasants fighting. By the time you get to mid March the cocks are sparring and showing off to the hen birds. Each cock can look after 7 or 8 hens. Ones that are dominant will collect their harem of hen birds and the loser will go onto fight the next male.

continued

They fight so much that they can be in a pretty poor state by the end of the season
It is marvelous to see them when they are displaying, they put one wing down and one wing up, and spread their tails so that it matches the wing, and then they run around the hen really showing off.



Cock Pheasant showing off, taken around Tostock

Now we will look at the common Partridge. there are two types of Partridge - Common known as English Partridge, and the red-legged Partridge known as the French Partridge. Most common Partridges inhabit farmland but the species also occurs on heaths and commons. for nesting, they require hedgerows between fields which modern farming methods have tended to eliminate, with an adverse effect on their numbers. Even where conditions are ideal. Common Partridge populations fluctuate considerably and a cold, wet Summer causes high mortality amongst young birds. Red-legged Partridges show a wider habitat tolerance, but generally occur in more open areas than the Common Partridge and need more space. They have been introduced for sporting purposes into various regions, notably Britain where they are thriving. Red-legged fly less readily than Common and rather than take to the air, family parties or coveys are more likely to disperse into cover when disturbed. Both species sight their nests on the ground, usually well concealed under a hedge or bramble bush. Red-legged usually lay 2 clutches in separate nests one of which will be incubated by the male, the other by the female. Sometimes they leave the 1st clutch apparently abandoned for some weeks before continuing incubation - (typical of the French), and the habitat can have strange consequences, such as Pheasants or English Partridges adding their eggs to the unattended nest. Common Partridges raise only 1 brood a year. Both species produce clutches of up to 20 eggs, chicks fly freely at 3 weeks. Common have a reddish tail and buff well marked plumage. They are social by nature, often feeding in large groups. Tend to run or walk away, rather than fly if intruders appear. The covey or group stays together even when flushed. Birds rise abruptly on take-off, often calling loudly, then fly low and fast over the ground. Flight is never prolonged always consisting of short fast bursts and glides. Male Partridge has orange head, grey breast and horseshoe mark on belly, all pale or absent on hen. Red-legged Partridge in flight is distinguished by plain olive /brown upper plumage unlike the mottled light brown of the Common Partridge. They also have a beautiful red beak and eye, as well as their lovely red legs, so lets take a look



English (Common Partridge)



Red-Legged French Partridge

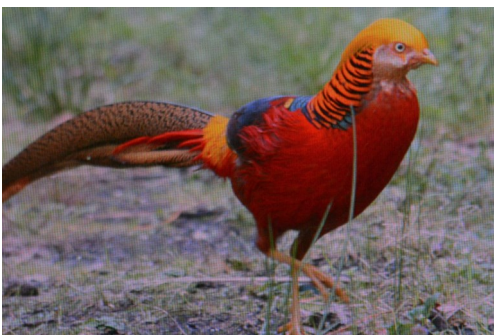
Finally, to sum things up I know here in Tostock that we have a few hen fanciers or poultry keepers and dare I suggest that they have a yearning for something more exotic such as ornamental pheasants or at least giving them some serious consideration. I hasten to add at this point that many of the wild Pheasants reared and released in Britain are now commercially produced cross-breeds that trace them back to more than 30 sub-species of game Pheasants that include Chinese ring-neck and black-neck predominantly from the Himalayas and Western China.

continued

But these birds are only a small part of the very diverse and intriguing Pheasant species that include some of the world's most colourful game birds and undoubtedly some of the world's rarest ornamental Pheasants. There are well over 50 types of Pheasants divided into various groups, such as the Ruffled Pheasants, Long-tailed Pheasants and Eared Pheasants, but for those considering a new venture I can mention the Golden Pheasant and the Yellow Golden Pheasant with their shimmering plumage, their striking silver with its glimmering silver and blue hues and the delicately multi coloured plumage of the Lady Amherst. There are well over 50 types of Pheasants divided into various groups, such as the Ruffled Pheasants, Long-tailed Pheasants and Eared Pheasants, but for those considering a new venture I can mention the Golden Pheasant and the Yellow Golden Pheasant with their shimmering plumage, their striking silver with its glimmering silver and blue hues and the delicately multi coloured plumage of the Lady Amherst.

Another one to mention is the flamboyant Reeves Pheasant which I have seen and photographed down on the road at the railway bridge here in Norton Road, Tostock. Ornamental Pheasants are easy to keep. Mixed corn and poultry pellets can be fed during the Winter and switched to either a poultry breeders ration or specific Pheasant breeders feed as the Spring breeding season approaches. This should be continued through the laying season. Pheasants should be kept in pairs or trios and each hen of the most easily kept species will lay between 20-25 eggs. Incubation takes 22-26 days depending on the species. The eggs are often dropped anywhere in the aviary but if some soil and straw is provided in the ground shelter the hens may make a nest, or it may be best to remove the eggs and hatch them under a broody Silkie-cross bantam, although using an incubator and brooder is often favoured. Ornamental Pheasants are most widely available in late Summer and Autumn when breeders have surplus birds to sell, but newcomers should be wary about buying from poultry sales or those selling related birds. The WPA is able to put new members in touch with responsible breeders. Golden Pheasants can be bought for around £40 a pair, but guaranteed pure bred birds from a breeder will be more than a £100. If you looking for something more unusual, expect to pay around £220 a pair.

Anyone interested in keeping Ornamental Pheasants should join the WPA – www.pheasant.org.uk



Golden Pheasant taken many years ago at an aviary in the High Street at Diss, no longer there. The white Pheasant is Leucistic not an Albino that was taken down in Grove Farm, Tostock now The Blackbourn , The Reeves Pheasant as mentioned on the road near the Railway bridge, Tostock . The beautiful Golden Pheasant taken on my travels. Without these beautiful Pheasants and Partridges it would leave a tremendous big hole in our countryside which would not be the same without them.

ST ANDREWS CHURCH

NEWS from the CHURCH

As we begin a New Year, there are a lot of thanks to be given for the many events which happened at the end of 2021! The Christmas Fair, back again after missing last year,



it was a very busy two days for everyone involved, setting up the stalls on Friday, then opening on Saturday, for our customers. There was an enormous Tombola, lots of Books, and more cakes than ever before. Soup lunches and teas were popular, Competitions kept visitors busy, naming the "Wolf" and guessing the weight of a beautiful Christmas cake.

Thanks to all who helped in any way, and to everyone who came to take part, it was a lovely social occasion and raised a total of £850 for Church funds.

The December Coffee Morning, held in the Village Hall was well-attended, with a large Raffle and a lot of chat, and very generously raised £200 for the DEC Appeal for the children of Afghanistan. A letter of thanks has been received.

The next **Coffee Morning** will be on **February 8th at 10:30** in the Hall.

On Dec 21st we welcomed the Norton Salvation Army Band to play for Carols, this year on the Green.

In spite of the cold dark night, a lot of people came to enjoy the evening and a donation was made to the band.

Thanks to **Gail** for organizing the evening.

The Carol Service was led by Revd. Jay Price and attended by a large congregation. Gifts were brought to put under the Christmas tree for the families helped by the Bury Refuge. Each year people are so generous to our appeal, our grateful thanks to everyone who

contributed. We have received a "Thank you" card.

Moving into 2022 – on January 8th the first **Wedding** of the year took place. **Holly Turner** and **Rory Gillespie** of Hazelwood House were married in a beautiful candle-lit ceremony by Revd. Price. Good wishes to them for the future!

The Tostock Bell ringers have rung for all our Christmas Services, also for New Year and Holly and Rory's Wedding. There have been few times when they were able to meet and practise during the last year as ringing was often prohibited, but their commitment has been an inspiration.

The Church Floodlights are sponsored in January by **Jean Le Fleming**, in loving memory of **Peter**.

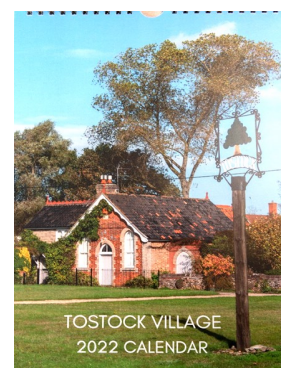
Jeanne O'Reilly

TOSTOCK CALENDAR 2022

This year we have managed to sell 78 calendars. Thank you to everyone who purchased a calendar and those who helped to sell them.

A profit of £146 has been made which will be shared between the Tostock Village Hall and the church.

Jim Langlois and Derrick Poole





NEWS FROM THE TOWER

It was with great sadness that we learnt of the death of Lionel Grooms just before Christmas 2021. Many of you will remember Lionel as a real village character, a familiar figure on the allotments, growing his pumpkins, which he'd deliver to families around the village, and his beautiful display of sunflowers every year.

Lionel never intended to be a ringer, he only came for a look and to help get the bells back in the tower, but somehow ended up being one of our regular ringers alongside his wife Margaret.

Always ready to help anyone out whenever they needed a helping hand. He enjoyed telling his many tales about his life growing up in America and the adventures he'd had here in England. It's true to say he enjoyed "A heated discussion", of which there were many!!

Thank you, Lionel, for all the laughs we will miss you.

Sue Marriott.

ST ANDREWS
CHURCH



Suffolk Guild

On Saturday 1 January 2022
St Andrews Tostock, Suffolk

Rounds, Call Changes and Tolling

1. Sue Marriott ©
2. Serena Steggles
3. Keith Osbourne
4. Tracey Welham
5. Mark Steggles
6. Jim Langlois



**Rung before and after Midnight and dedicated in memory of
Dr Ann Gath and Lionel Groom
both former ringers at Tostock and who have sadly died in the last 12 months.**

Sue Marriott.



St Andrew's Church Tostock

**(Benefice of Pakenham, Norton & Tostock
with Great Ashfield, Hunston & Stowlangtoft)**

Rector: Revd Katherine Valentine Tel 01359 235095

Email: kavalentine677@gmail.com (new email!)



Website: for more details of all our churches - including Tostock - see the national Church of England website www.achurchnearyou.com

Our benefice Church magazine is also available online at www.vcnews.org.uk

FEBRUARY - MARCH 2022 BENEFICE CHURCH SERVICES

TOSTOCK SERVICES ARE HIGHLIGHTED IN **BOLD**

FEBRUARY

6TH	4TH SUNDAY BEFORE LENT	
8am	Holy Communion	Norton
10am	Family@Church CANDLEMAS	Pakenham
13TH	3RD SUNDAY BEFORE LENT	
9.30am	Holy Communion	Tostock
9.30am	Morning Worship	Great Ashfield
11am	Holy Communion	Pakenham
6pm	Evensong	Norton
20TH	2ND SUNDAY BEFORE LENT	
9.30am	Holy Communion	Pakenham
11am	Holy Communion	Great Ashfield
11am	Morning Worship	Norton
6pm	Evening Prayer & Praise	Tostock
27TH	SUNDAY NEXT BEFORE LENT	
9.30am	TOAST	Great Ashfield
9.30am	Holy Communion	Norton
11am	Holy Communion	Hunston
11am	Morning Worship	Tostock

MARCH 2022

2ND	ASH WEDNESDAY	
10am	Holy Communion (BCP)	Norton
7.30pm	Holy Communion with imposition of ashes	Pakenham
6TH	1ST SUNDAY OF LENT	
8am	Holy Communion (BCP)	Norton
10am	Family@Church LENT	Pakenham

continued

13TH	2ND SUNDAY OF LENT	
9.30am	Holy Communion (BCP)	Tostock
9.30am	Morning Worship CMS	Great Ashfield
11am	Holy Communion	Pakenham
6pm	Evensong	Norton

20TH	3RD SUNDAY OF LENT	
9.30am	Holy Communion (BCP)	Pakenham
11am	Holy Communion	Great Ashfield
11am	Morning Worship	Norton
6pm	Evening Prayer & Praise	Tostock

27TH	MOTHERING SUNDAY	
9.30am	TOAST	Great Ashfield
9.30am	MOTHERING SUNDAY Family Communion	Norton
11am	MOTHERING SUNDAY SERVICE	Hunston
11am	MOTHERING SUNDAY SERVICE	Tostock

SERVICES AT ROMNEY COTTAGE, TOSTOCK.
Mondays at 10am on 21st February and 21st March.
Praise & prayer, chat and refreshments.
All welcome.

BENEFICE BIBLE STUDY

We have decided to continue the study group that started to meet before Christmas, continuing our study of Luke's Gospel in fortnightly meetings. The dates for FEBRUARY are **Mondays the 7th and the 21st Feb at Spring House, Church Rd Tostock.** In MARCH the dates will be Mondays 7th & 21st once again, venue TBC. Please contact Revd Katherine for more information. All welcome. (Park in the pub car park and turn left down the drive by Reynolds, opposite the side of the pub, keep going left and you will come to Spring House). By kind hospitality of John and Maureen Cytacki.

LOVE YOUR MUM! (AND GRANDMA!)
and bring them to church to celebrate on
MOTHERING SUNDAY 27th March

There are 3 Mothering Sunday services in the Benefice to choose from - see above. Also the TOAST cafe at Great Ashfield will have a Mothering Sunday theme. This is a lovely family occasion for all ages, when however young or old we are we can say thank you to God for our Mums, Grandmas, and or for anyone who has shown us a mother's love. Posies will be given out at all our services on this day. All ages and families of any shapes or sizes welcome!



MOT & Servicing Centre

Car Sales Van Sales

Motorbike Sales

Car Hire

Van Hire

All makes serviced & repaired
MOT's at affordable prices

Opening times

Mon-Fri 8.00am – 5.30pm

Sat 8.30am – 4.00pm

Telephone **01359 271180**

Gl Cars Limited

The Office

Place Farm,

Church Road,

Tostock.

IP30 9PG

Email gl.cars@btconnect.com

www.gl-cars.co.uk

Rattlesden MOT Centre



Unit B Corern Farm, Woolpit Road, Rattlesden
Bury St Edmunds, Suffolk. IP30 0RZ

Contact:

Tony 07908 464003 or Richard 07767 616188

Email: info@rattlesdenmotcentre.com

Class 4 & 7 MOT- Cars – Vans - Motorhomes



TOSTOCK TENNIS CLUB WELCOMES NEW MEMBERS

COMMITTEE 2020-2021

CHAIRMAN- FREDDIE WALTON
TREASURER/MEMBERSHIP - ELIZABETH DUNN
SECRETARY - SUSIE WALTON
COMMITTEE MEMBERS -
JOHN AND LIZ ADAMS AND NIGEL KAINES

MEMBERSHIP FEES 2020-21

FAMILY MEMBERSHIP £40
COUPLES MEMBERSHIP - £25
ADULT (SINGLE) MEMBERSHIP - £15
CHILDRENS MEMBERSHIP (U16S) - £5

WE WOULD ENCOURAGE FEES TO BE PAID BY BACS BUT CASH AND CHEQUES ARE ALSO ACCEPTED.
BACS DETAILS: ACC: 01082391 AND SC: 30-91-49
PLEASE STATE YOUR NAME AS REFERENCE

GUEST COURT FEES APPLY - ADULTS £2 AND CHILDREN £1

IF YOU WOULD LIKE ANY FURTHER INFORMATION ABOUT THE CLUB OR WOULD LIKE
TO CONTACT US.

ELIZABETH DUNN (01359 270270) - EJD1@TALKTALK.NET

OR

SUSIE WALTON (07793406076) - SUSIEWALTON85@GMAIL.COM



Local Caring Independent Funeral Service

24 Hour Personal Service

Qualified

Experienced

www.andrewbingham.co.uk

01449 771666

The Nutshell, Milton Road South, Stowmarket, IP14 1EZ



Golden Charter
Funeral Plans



ANDREW BINGHAM INDEPENDENT FUNERAL SERVICE

THE NUTSHELL, MILTON ROAD SOUTH,
STOWMARKET, SUFFOLK, IP14 1EZ

www.stowmarketfunerals.co.uk

Andrew Bingham

Dip. F.D. M.B.I.E.

01449 771666

CHIMNEY SWEEP

ECO SWEEP

CHIMNEY SERVICES

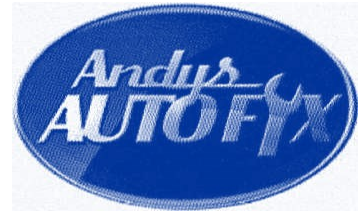
- NEW POWER SWEEPING METHOD USED FOR A MORE THOROUGH CHIMNEY CLEAN THAN BRUSHES.
- INDUSTRIAL HEPA FILTERED VACUUM.
- FULLY INSURED.
- INSURANCE RECOGNIZED CERTIFICATES ISSUED.
- SPOTLESS, RELIABLE AND FRIENDLY SERVICE.
- ALL CHIMNEYS, WOODBURNERS, AGA, BOILER FLUES SWEPT.
- GUILD OF MASTER SWEEPS CERTIFICATED MEMBER.



Power sweeping



TEL. 01359 232335



The local solution to your motoring

Open 6 days a week

MOT Testing - Tyres - Exhausts - Servicing - Bulbs

Diagnostics - Clutches - Cambelts -

Batteries - Wipers - Mechanical Repairs -

Wheel Alignment - Loan Car

Friendly and Qualified Staff and much more!

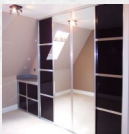
Credit and Debit cards accepted

01359-230097

Andys Auto Fix, Woolpit Road, Norton,
IP31 3LU

APN. WARDROBES

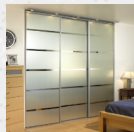
**MADE TO MEASURE SLIDING WARDROBE SYSTEMS
SUPPLIED & FITTED**



MAKE 100% USE OF SPACE
ANGLED CEILINGS
10 YEAR GUARANTEE



A WIDE RANGE OF FINISHES
MATCHING FURNITURE



WALL TO WALL
IDEAL FOR HOME OFFICE
FLOOR TO CEILING

BESPOKE INTERIORS TO SUIT YOUR NEEDS



CONTACT

ANDY NICE

For a free no obligation quote

PHONE: 01359 271727 MOB: 07747 846562

WEBSITE: www.apnwardrobes.co.uk

EMAIL: andynice@btinternet.com

Rothwell's Carpet & Stone Floor Cleaning

Carpet Cleaning & Stone Floor, Upholstery, Rugs

A few points that make us stand out,

Rothwell's has been in business since 1993

We're an honest local family firm.

Our large truck mounted machines mean more
cleaning & drying power
for the best results possible.

Members of both the NCCA and TACCA.

We will move the furniture.
100% satisfaction or it's FREE.

Call Oliver and Max Campbell
for expert help today.

01638 428060

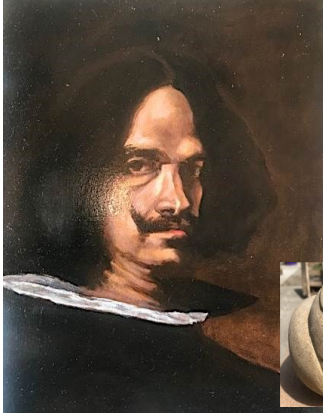
www.rothwells.biz

Original Painting And sculpture

at affordable prices by Tostock-based artist

Charlotte Kearsley

07525 412343



I paint in oils, acrylics and watercolours,

Landscapes, Portraits of adults, children,
pets, flower paintings and reproductions
of famous artworks

Please see website for samples of
work and customer testimonials



info@charlottkearsleyartist.com

www.charlottekearsleyartist.com

Unfortunately, I alone am unable to put the time and effort into producing this magazine, which really is a true shame .

it could be so much better

ATTENTION EVERY RESIDENT in our COMMUNITY

This is your magazine and your opportunity to maximise the effectiveness as a source of information and communication piece for each other - Whats on where?

We need as many people as possible to get involved, contribute as little or as much as you like , all ages .

What would you like to include?

How would you like to help?

We need complete community team effort.

Editor, publicist, IT Media, Youth forum/platform

co-ordinator, advertising, budget finance,

Artwork design, fundraiser, Top tips ie money savers,
computer cheats for gamers, things for sale or needed,

Projects, i.e., allotment corner, clubs, pub hub, swop
shop, Wildlife, events organiser Fun on the green for all
from toddlers to teens and pets. Etc.,

PLEASE CONTACT A MEMBER OF THE PARISH COUNCIL

IF YOU WOULD LIKE TO HELP IN ANY WAY AT ALL.

